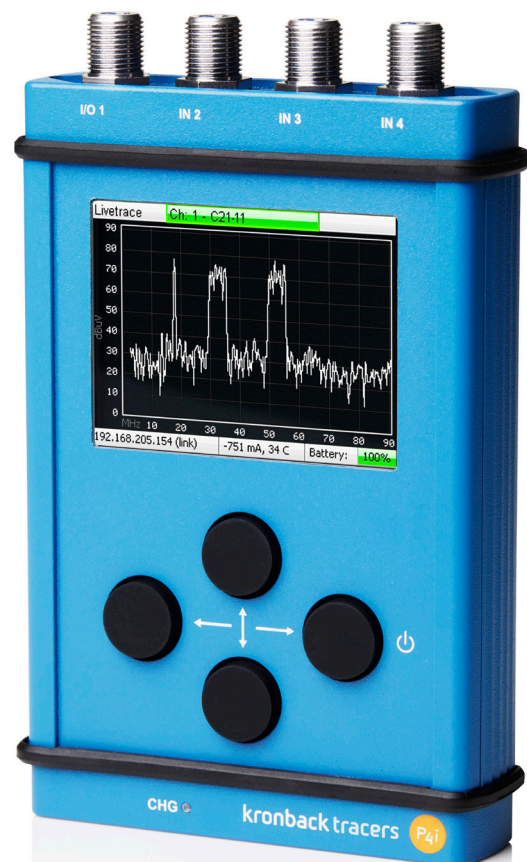
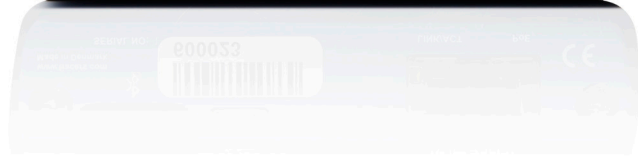


kronback tracers

P4i

P4i HFC FIELD ANALYZER



FEATURES

- * Returnpath spectrum analyzer
- * Downstream carrier monitor
- * Sweep system
- * Pilot tone generator
- * Quality monitoring
- * DOCSIS burst trigger
- * Sun readable display
- * Smartphone and tablet support
- * Ethernet and Bluetooth access
- * High battery performance

SWEEP SYSTEM P4i AND X16



HFC NETWORK



P4i

www.kronback.com

P4i HFC FIELD ANALYZER

Kronback Tracers P4i is a Docsis 3.1 compatible returnpath spectrum analyzer with carrier monitoring capability and an excellent Pilot tone generator. Multiple units can work together, providing a complete 1218 MHz sweep system. A compact housing with ruggedized pushbuttons and a high contrast sun readable display together with a long-lasting battery ensures that the unit is the right choice for demanding HFC field technicians.

RETURNPATH SPECTRUM ANALYZER

The Kronback Tracers P4i returnpath analyzer provides a real-time spectrum display ranging from 3 to 204 MHz. It can be placed in the headend/hub site or in street racks for temporary measurement usage. In street racks the 3 inputs can be used to analyze multiple HFC branches for noise.

DOWNSTREAM CARRIER MONITOR

Downstream carriers can be monitored within the 50-1218 MHz range. Precise readout of analog and digital carriers is presented online.

SWEEP SYSTEM

The P4i features a powerful up- and downstream sweep system supporting the returnpath path range of 3-204 MHz and downstream from 50 up to 1218 MHz. Together with the powerful X16 headend unit, a full and precise network alignment can be performed effectively.

PILOT TONE GENERATOR

The P4i provides 2 pilot tones for precise network alignment. Each pilot tone can be set frequency and level agile within the full 3-1218 MHz range.

SUN READ DISPLAY

A state of the art QVGA color display ensures a precise and pleasant readout of the P4i. The display is anti-reflective and ensures excellent working conditions, even in direct sunlight exposure.

SMARTPHONE AND TABLET SUPPORT

The P4i can be accessed via the built in Bluetooth antenna or via Ethernet.

SPECIFICATIONS

INPUT 1-3 & I/O

- Connector: F-type 75 Ohm, AC coupled.
- 100V DC isolation
- Frequency response: 3-1218 MHz
- Return loss return path: >18 dB
- Return loss downstream: 18 dB@40 MHz, -1,5 dB/oct
- Isolation: >60 dB

PILOT

- Frequency range: 3-1218 MHz
- Frequency steps: 10 kHz
- Frequency error: <5 kHz
- Level range: 30 dBuV - 104 dBuV
- Level steps: 1 dB
- Level error: <1 dB

CONNECTORS

- F-type 75 Ohm, AC coupled
- Ethernet RJ45
- USB connector: USB type micro-B

INDICATORS

- Charging status

LCD DISPLAY

- Backlight colour: White
- Display mode: TFT, QVGA dimension 55mm x 41 mm
- Viewing angle horizontal: >70 deg
- Vertical: >65 deg

PHYSICAL SPECIFICATIONS

- Height: 140 mm
- Width: 83 mm
- Depth: 23 mm
- Weight: 422 g

MANAGEMENT

- Remote
- Web
- SYSLOG
- SNMP
- USB
- TELNET
- FTP
- Bluetooth
- Local control
- Pushbuttons

ELECTRICAL

- Max. power consumption: 6 Watt
- USB power: 5 V
- Max USB current draw: 1500 mA
- Fuse: Internal autofuse
- Power over Ethernet, IEEE803.2af (pin 4-5)

NETWORK

- IEEE 802.3 10Base-T Ethernet
- IEEE 802.3u 100Base-Tx Ethernet
- Fixed IP address and DHCP support

ENVIRONMENTAL

- Operating temperature: 5°C ~ 45°C
- Storage temperature: -20°C ~ 55°C
- Operating humidity: 10% ~ 90%, non-condensing

BATTERY

- Type: Li-ion, rechargeable
- Nominal voltage: 3.7 V
- Minimum capacity: 3.4 AH @ C/5 Rate @ 23 °C
- Cycle life: >500 cycles
- Memory: No memory effect
- Operating temp: -20 °C to 60 °C
- Safety: Meets UL1642 standard
- Transportation: Excepted from regulations

kronback tracers

Kronback Tracers
Filmtorvet 70
Jonstrup
DK-3500 Værløse
Denmark

Phone (+45) 46 907 909
Fax (+45) 46 907 910

sales@kronback.com
www.kronback.com

Kronback Tracers is an innovative, rapidly-growing company. We operate globally and our dedicated and experienced staff are ready to serve our customers worldwide.

We encourage you to contact our sales organization to test our products on your premises.

Kronback Tracers assumes no responsibility for the accuracy of this printed information. All specifications are subject to change without notice.

